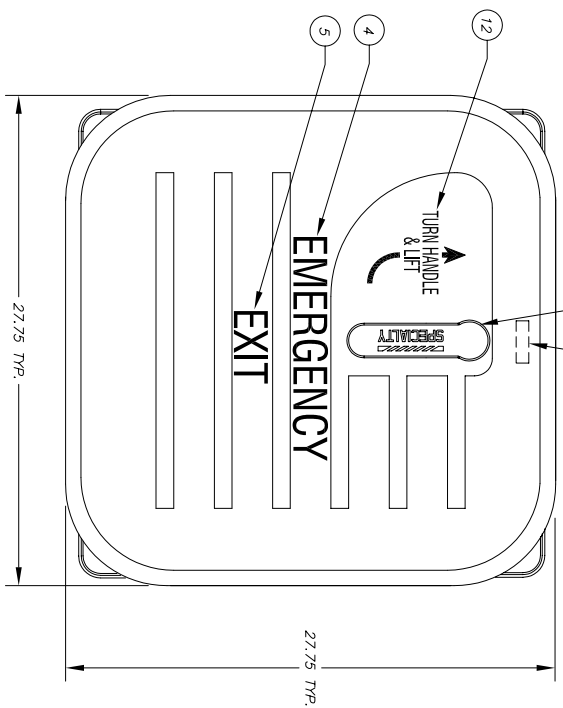
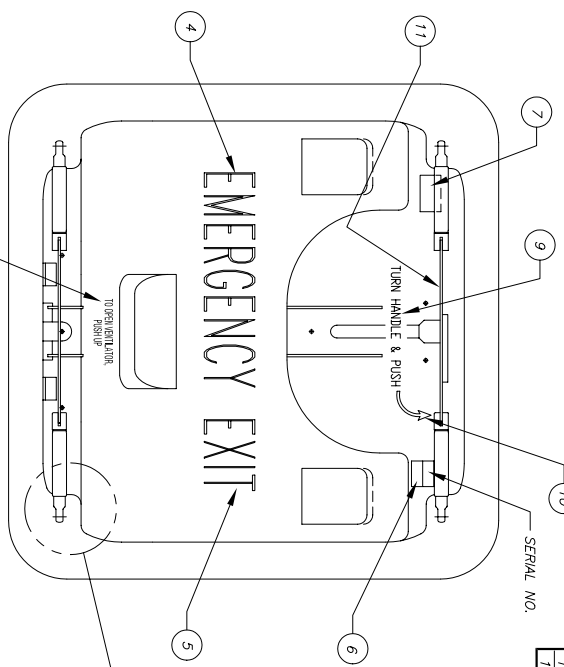
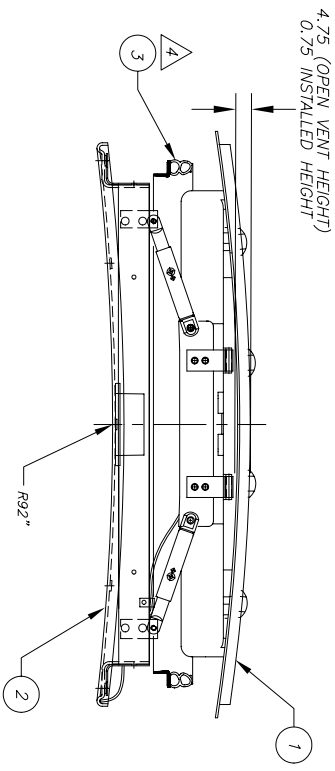


HANDLE SHOWN IN LATCHED POSITION
HANDLE MAY BE TURNED CLOCKWISE
TO OPEN. HATCH MAY BE OPENED
FROM INSIDE OR OUTSIDE.



FRONT VIEW

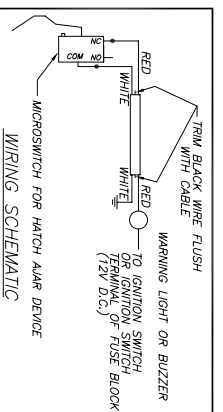
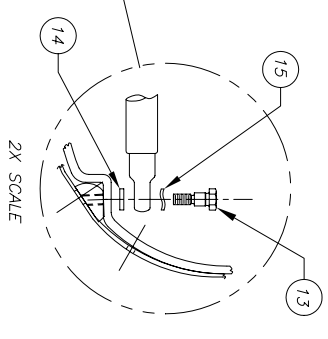


INTERIOR VIEW

- NOTES:**
- HATCH MEETS OR EXCEEDS FMVSS 217 FOR SCHOOL BUS APPLICATIONS WITH THE EXCEPTION OF SS.5.3C OF INTERIOR MATERIALS.
 - HATCH MEETS OR EXCEEDS FMVSS 302 FOR FLAMMABILITY OF INTERIOR MATERIALS.
 - HOLE CUT-OUT FOR HATCH INSTALLATION TO BE 23.5" X 23.5" WITH 4.0" RADIUS CORNERS WITH A 1" CLEARANCE ON THE TOP METAL SHEET TO BE FREE OF FASTENERS OR OTHER DISCONTINUITIES.
 - CONTINUOUS LOOP ADHESIVE MOUNT GASKET PROVIDED WITH HATCH TO BE INSTALLED ON TOP METAL SHEET CUT-OUT WITH SPICE LOCATED AT REAR OF HATCH.
 - HATCH SUPPLIED WITH "EMERGENCY EXIT" & OPERATING INSTRUCTIONS ON INSIDE OF HATCH LID.
 - SWITCHES SUPPLIED WITH 24" LONG LEADS.
 - HATCH LID MATERIAL: ASA CARBON ABS, INTERIOR FRAME: TPO.
 - HATCH MEETS OR EXCEEDS CANADIAN STANDARDS ASSOCIATION STANDARD D250-07 FOR SCHOOL BUSES.

ITEM	PART NO.	QTY	QTY	QTY	DESCRIPTION
1	009319	1	1	1	LID ASSY, PROLO (WHITE)
1	009322	-	-	1	LID ASSY, PROLO (GRAY)
2	009320	-	1	-	ASSY, TRIM RING, PROLO (WHITE)
2	009320	-	1	-	ASSY, TRIM RING, PROLO (WHITE) NO ALARM
2	009348	-	1	-	ASSY, TRIM RING, PROLO (GRAY)
3	009332	1	1	1	GASKET, PROLO
4	008715	2	2	2	DECAL, "EMERGENCY", BLACK
5	008716	2	2	2	DECAL, "EXIT", BLACK
6	008765	1	1	1	DECAL, HATCH MODEL NO.
7	008714	1	1	1	DECAL, "TO OPEN VENTILATOR"
8	009349	1	1	1	DECAL, "TURN HANDLE & PUSH"
9	008718	1	1	1	DECAL, ONE WAY INSIDE ARROW, RED
10	008548	1	1	1	DECAL, PROLO "TO CLOSE..."
11	009341	1	1	1	DECAL, "TURN HANDLE & LIFT"
12	009333	1	1	1	DECAL, "TURN HANDLE & LIFT"
13	008846	2	2	2	SCR, 1/4-20x1.4 RH, SHOULDER, WASPRS
14	008692	2	2	2	WASHER, 1/4 ID X 7/16 OD SS FLAT
15	008905	2	2	2	WASHER, 3-WAVE

9245-0201 (WHT)-NO ALARM	9245-0200 (WHITE)	9245-G200 (GRAY)
--------------------------	-------------------	------------------



9245-0201	ENGLISH / WHITE / NO ALARM
9245-G201	ENGLISH / GRAY / NO ALARM
9245-0200	ENGLISH / WHITE
9245-G200	ENGLISH / GRAY
<p>SPECIALTY MANUFACTURING INC. 10200 PINEVILLE ROAD P.O. BOX 790 PINEVILLE, NC 28134</p> <p>THE INFORMATION CONTAINED HEREIN IS THE PROPERTY OF SPECIALTY MANUFACTURING INC. AND IS NOT TO BE REPRODUCED OR TRANSMITTED IN ANY FORM OR BY ANY MEANS, ELECTRONIC OR MECHANICAL, INCLUDING PHOTOCOPYING, RECORDING, OR BY ANY INFORMATION STORAGE AND RETRIEVAL SYSTEM, WITHOUT THE EXPRESS WRITTEN PERMISSION OF SPECIALTY MANUFACTURING INC. EXCEPT AS EXPLICITLY AUTHORIZED IN WRITING BY SPECIALTY MANUFACTURING INC.</p> <p>PROLO HATCH, 92"R, NO VENT, WHITE</p> <p>DIR: CUST-DWG FILE NAME: 9245-0200K DRAWING PART NO. REV: K</p>	