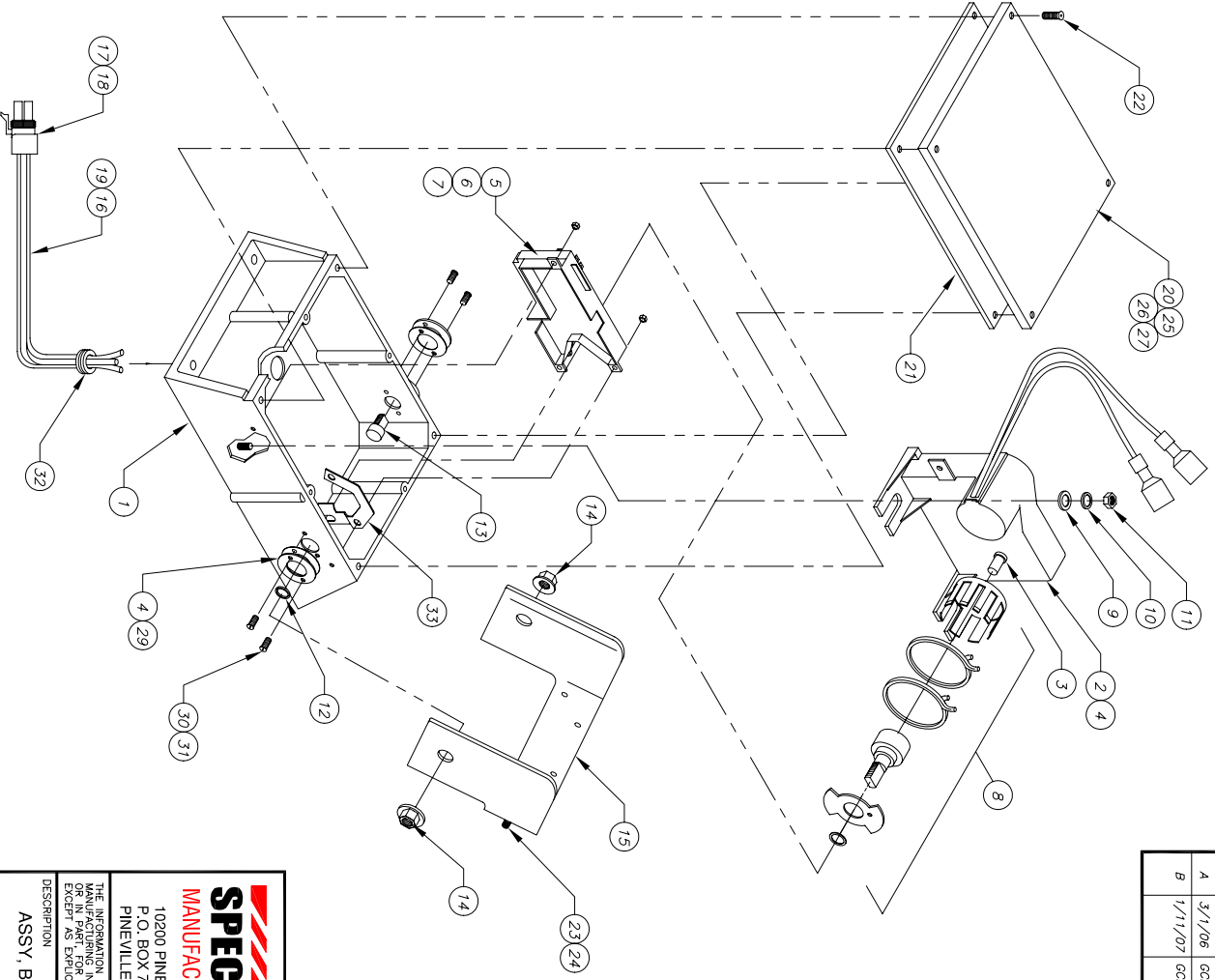


ITEM	PART NO.	QTY	DESCRIPTION
1	068101	1	BASE, 6 SERIES X/A, CAST
2	005014	1	MOTOR, 5-SERIES, 12V, W/ BOOT
3	005065	1	V-SEAL
4	006123-10	2	BUSHING, MOLDED, 2" OD
5	006120	1	CONTROL MODULE, 6-SERIES
6	000609	2	WASHER, #8 MACH FLAT
7	000608	2	NUT, #8-32 THIN NYLON INSERT
8	006118	1	ASSY, CLUTCH W/ VANE, 6-SER X/A
9	000147	2	WASHER, 1/4 FLAT
10	000148	2	WASHER, 1/4 SS SPLIT LOCK
11	000143	2	NUT, 1/4-20 HEX
12	006041	1	SEAL, BUVA, 1/2 ID
13	005057	1	PIN, HINGE, INVERTED UNIT
14	005122	2	NUT, WHIZ, HX WASHER, 1/2-20
15	005168	1	HINGE, PAINTED W/ STUDS, 5-SER
16	006119-1	1	SUB-ASSY, HARNESS, 6-SER X/A
17	004053	1	PLUG, SEAL - PACKARD
18	005053	1	PLUG, WEATHER PACK, 4 HOLE
19	005013	2.5'	LOOM, BLK CONV
20	068125	1	COVER, 6-SER X/A, PAINTED
21	006128	1	GASKET, 6-SER COVER
22	006138	4	SCR, #10-32 X 3/8, PAN
23	000142	4	NUT, 1/4-20 NYLON INSERT, LOCK
24	000104	4	WASHER, NYLON
25	000107	1	LABEL, 6-SERIES SERIAL NO.
26	006100	1	DECAL, "NO STEP"
27	005046	1	DECAL, "NO STEP"
28	005037	1	ASSY, GK DISC 160" BUS HARNESS
29	006144	2	GASKET, 6-SER BUSHING
30	006137	4	SCREW, #10-32 X 5/8 FH
31	004048	4	NUT, #10-32 NYLON LOCK
32	003027	1	GROMMET
33	006154	1	CLIP, MODULAR, 6-SER



NOTE
 1 INCLUDE 005037 WITH ASSY AT SHIPPING.

REV.	DATE	BY	NOTES
A	3/1/06	GCM	REDRAWN TO SHOW DETAILS & BOM
B	1/11/07	GCM	DEL (1) 068106-05 (1) 005035; ADD (1) 068101, (2) 006123-10 (2) 006144 (4) 006137 (4) 004048, 003027, (1) 006154, REV'D DESCR FOR 000609

SPECIALTY MANUFACTURING INC.
 10200 PINEVILLE ROAD
 P.O. BOX 790
 PINEVILLE, NC 28134

THE INFORMATION CONTAINED HEREIN IS THE PROPRIETARY DATA OF SPECIALTY MANUFACTURING INC., AND IS NOT TO BE DISSEMINATED OR DISCLOSED IN WHOLE OR IN PART WITHOUT THE WRITTEN PERMISSION OF SPECIALTY MANUFACTURING INC. EXCEPT AS EXPRESSLY AUTHORIZED IN WRITING BY SPECIALTY MANUFACTURING INC.

DESCRIPTION
 ASSY, BASE, 6 SERIES, SOLID STATE - X/A

DIRECTOR: C:/ACAD/MAIN
 FILE NAME: 068106B

DRAWING/PART NO: 068106
 REV: B

DRAWN BY: GCM
 DATE: 3/1/06
 MATERIAL: STEEL
 FINISH: BOM
 SCALE: 1 OF 1 SHEET SIZE B
 TOLERANCES (EXCEPT AS NOTED): DECIMAL: .XXX ± .010 XX ± .03
 ANGLE: ± 1°