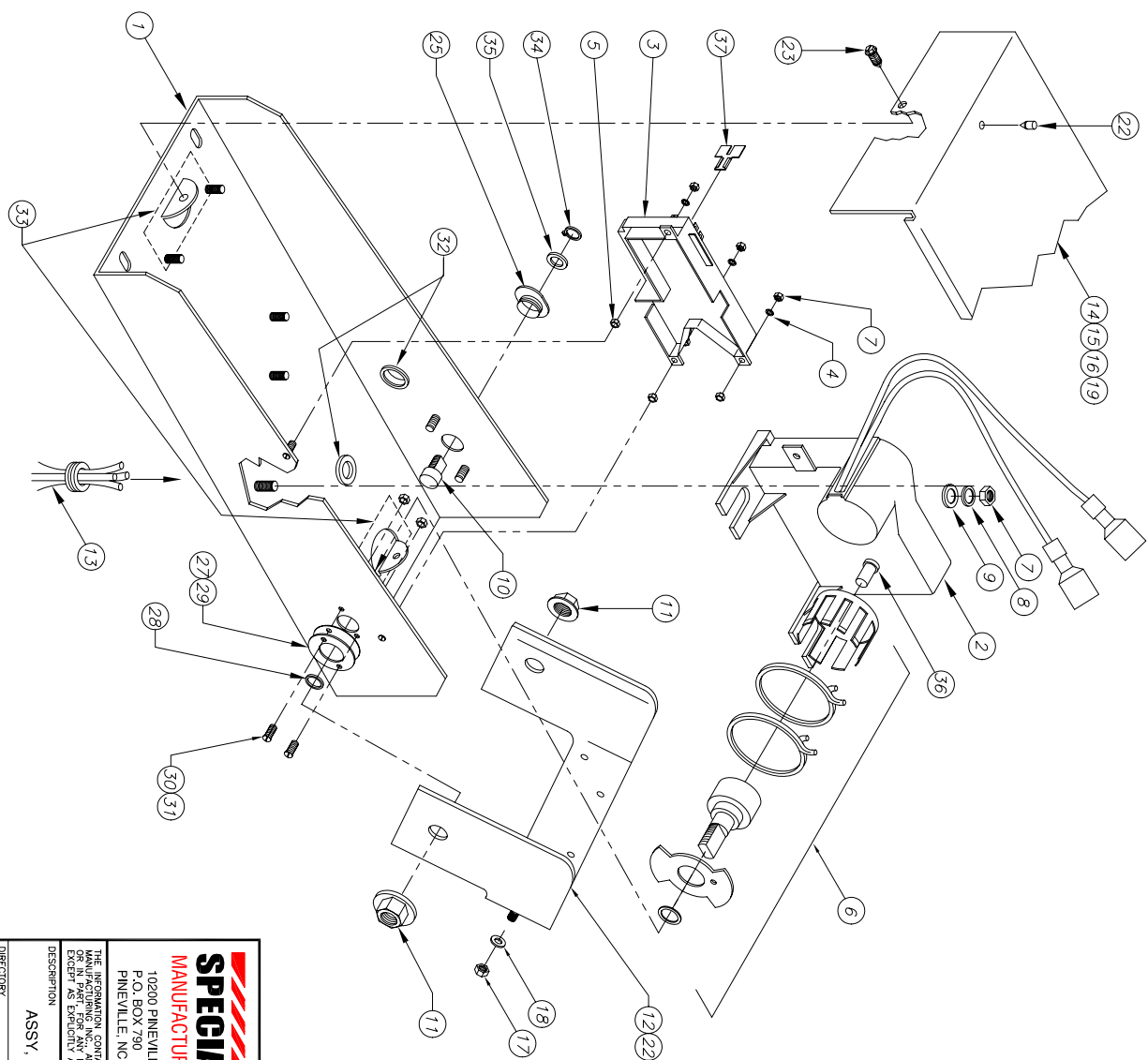


ITEM	PART NO.	QTY	DESCRIPTION
1	006101	1	BASE, 6-SER. PAINTED W/ STUDS
2	005014	1	MOTOR, 12VDC - W/ BOOT
3	006120	1	MODULE, 6-SERIES CONTROL
4	000609	3	WASHER, #8 MACH. FLAT
5	000153	3	SPACER, 1/4-20 JAM NUT
6	006118	1	ASSY. CLUTCH DRIVE W/ VANE
7	005832	5	NUT, #8-32 NYLON INSERT HEX
8	000147	2	WASHER, 1/4 FLAT
9	000148	2	WASHER, 1/4 SPLIT LOCK
10	005057	1	PIN, HINGE - INVERTED UNIT
11	005122	2	NUT, 1/2-20 HX WASHER WHIZ
12	005168	1	HINGE - PAINTED W/ STUDS, 5-SERIES
13	006117	1	HARNES, WIRE
14	005125	1	COVER, 5-SERIES X/A
15	006100	1	LABEL, SERIAL #, 6-SERIES
16	000107	1	DECAL, SPECIALTY S/A & X/A BASE
17	000142	4	NUT, 1/4-20 NYLON INSERT, LOCK
18	000104	4	WASHER, .030 X .265 X .056 NYLON
19	006102	1	DECAL, SOLID STATE CONTROL (NOT SHOWN)
20	005126	1	ADAPTER, 5-SERIES WINDGUARD (NOT SHOWN)
21	007000	1	WINDGUARD - FOR S/A (NOT SHOWN)
22	000177	5	BUMPER, 1/16 GRV RUBBER
23	000137S	4	SCREW, #10 X .5 HX HD
24	005023	.02	SILICONE, BLACK
25	005176	1	BUSHING, 1/2" ID, NYLON W/ TABS
26	003025	1	TIE STRAP, BLACK, 4.5"
27	006123-10	1	BUSHING, 2" OD, 1/2" ID MOLDED
28	006041	1	SEAL, Buna
29	006144	1	GASKET, 6-SER. BUSHING
30	006137	2	SCREW, #10-32 X 5/8 SS SOCK HD
31	004048	2	NUT, #10-32 NYLON HEX
32	003027	2	GROMMET
33	005034	.006	TAPE, BLACK, 2" X 36 YDS
34	005165	1	SNAP RING
35	005164	1	WASHER, SS, 1" O.D.
36	005065	1	V-SEAL
37	004034	1	TERM. SPADE FORK



REV.	DATE	BY	NOTES
A	5/19/07	SCW	DEL'D (1) 006154, ADDED (1) 004034

SPECIALTY MANUFACTURING INC.
10200 PINEVILLE ROAD
P.O. BOX 790
PINEVILLE, NC 28134

THE INFORMATION CONTAINED HEREIN IS THE PROPERTY OF SPECIALTY MANUFACTURING INC. AND IS NOT FOR ASSEMBLY OR DISASSEMBLY IN WHOLE OR IN PART WITHOUT THE WRITTEN AUTHORIZATION OF SPECIALTY MANUFACTURING INC. EXCEPT AS EXPRESSLY AUTHORIZED IN WRITING BY SPECIALTY MANUFACTURING INC.

SCALE: 1 OF 1 SHEET SIZE B
TOLERANCES (EXCEPT AS NOTED)
DECIMAL: .xxx ± .010 xx ± .03
ANGULAR: ± 1'

DRAWN BY: GJM DATE: 1/22/07
CHECKED BY: GJM DATE: 1/22/07
FINISH: GJM

DESCRIPTION	ASSY. SOLID STATE BASE-6-SERIES
DIRECTOR	GJ/ACHD/MAIN
DATE	006110
REV.	A